



Ritmo

PLASTIC WELDING TECHNOLOGY





RITMO S.P.A. is a 30 year experienced company and leader in manufacturing of plastic welding equipment. All products are designed and built according to International standards and directives (UNI, ISO, CEE). Since the very beginning, quality and technology innovation are RITMO's milestones, and time after time, this philosophy is always more recognized by the global market. RITMO strong points are its ideas to design and produce accurate, fast, versatile, modular and easy-to-use welding machines. Products range includes butt fusion, electrofusion and extrusion equipment. Ritmo is also providing a complete line of accessories and useful instruments for pipe cutting and weld preparation such as the band saws. RITMO's regards towards the client has brought to the new-born "RITMO FUSION OPERATOR SCHOOL", which is a welding school with the goal of building qualified personnel and spread the knowledge about the technical potentiality of RITMO's equipment: TECHNOLOGY MADE IN ITALY.



**ISO 9001
Quality System**

...the result of
our joint
efforts



DELTA 160 M



DELTA 160 M is a manual butt fusion welder for pipes up to Ø 160 mm. Leading particulars are the restricted weight, minimum overall dimensions and versatility. Featuring: a machine body, two clamps, an extractable electric milling cutter provided with a safety micro-switch, an extractable heating plate (with an independent thermometer to see the real working temperature and an electronic thermo regulator “Digital Dragon” with display), a locking device that helps the operator to apply the necessary welding force and two lateral supports on request.

The Digital Dragon is an high precision electronic thermoregulator ($\pm 1^\circ \text{C}$ accuracy) which comes in a protective waterproof rubber casing with digital display and regulating buttons. This new system includes Led indicators to check if the machine is working normally (live tension and working temperature), contingent probe's failures and/or temperature anomalies.

STANDARD COMPOSITION:

- Machine body;
- Heating plate with digital electronic; temperature control;
- Milling cutter;
- Milling cutter/Heating plate support.

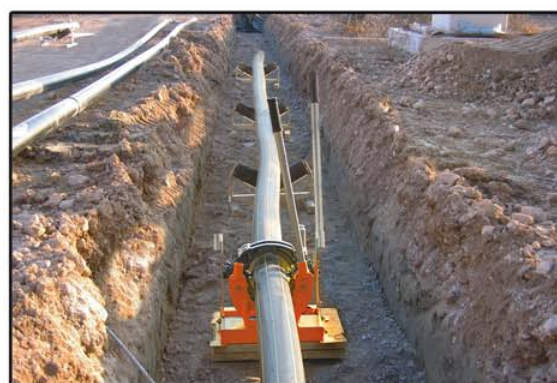
ON REQUEST (ACCESSORIES)

- Clamps' inserts from Ø 40 to 140 mm;
- Lateral support;
- Trolley for machine transportation and support.

TECHNICAL FEATURES

Working range	40 ÷ 160 mm	
Power supply	110 V	230 V
	Single phase - 50/60 Hz	
Total absorbed power	1850 W	1700 W
Working temperature	180 ÷ 280°C	
Ambient temperature	-5 ÷ +40°C	
Materials	HDPE, PP <small>* For other materials contact RITMO spa</small>	

DIMENSIONS (W x D x H)	
Machine body	450 x 384 x 830 mm
WEIGHT	
Total (Delta 160 M only)	35,10 Kg





Ritmo
PLASTIC WELDING TECHNOLOGY

WHERE THERE'S PLASTIC TO WELD



CONTACT RITMO!

BASIC LINE

BUTT FUSION MACHINES



RITMO S.p.A.
Via A. Volta, 7 35037
Bressano di Teolo (PADOVA) ITALY

Ph. +39 049 9901888
Fax +39 049 9901993

info@ritmo.it
www.ritmo.it