



## VR 250

A professional welding machine ideal for medium sized pipes and sewers up to Ø 250 mm. It consists of a machine body with a pressure regulating device, a pair of clamps, two lateral supports, an electrically controlled milling cutter for levelling the ends of the pipe and/or fitting with a safety microswitch, an extractable heating plate with automatic device to control the temperature, a sliding support and a steel case that acts as a work bench and cover when transporting the machine. The **VR 250** can weld fittings such as **bends** and **tees**. Branches can also be welded thanks to the upper extractable jaws (on request) called **SUPRA**.

Available in 110 V and 230 V.

### STANDARD COMPOSITION

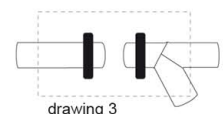
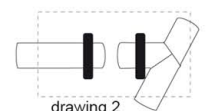
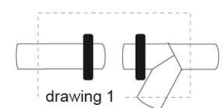
- Machine body with a milling cutter, lateral supports, clamps adapters and lateral supports adapters Ø 75 - Ø 250 mm (Ø 140 and 180 mm on request), service spanners;
- TP VR 250 TE plate;
- Right and left clamp Ø 250 and

### ON REQUEST (ACCESSORIES)

- Clamps adapters Ø 140 and 180 mm;
- Lateral supports adapters Ø 140 and 180 mm;
- Sets of extractable upper jaws SUPRA from Ø 75 to 225 mm;
- Blades made of special anti wear steel for face pipe/fitings "Silent" type Geberit.
- Wooden case for SUPRA extractable upper jaws;

### TECHNICAL FEATURES

Working range	75 ÷ 250 mm	
Power supply	110 V	230 V
	Single phase - 50/60Hz	
Total absorbed power	1750 W	2060 W
Working temperature	180 ÷ 280°C (A)	
Ambient temperature	-5 ÷ +40°C	
Time to reach welding temperature	~ 20 min.	
Materials	HDPE, PP, PB, PVDF	
<b>DIMENSIONS (W x D x H)</b>		
Machine being used	835 x 1240 x 1530 mm	
<b>WEIGHT</b>		
Machine with "SUPPLIED WITH"	123,00 Kg	



### The meaning of SUPRA

*This word identifies the different type of clamps mounted on this welding machine. They have been specifically designed to be able to lock "branch" fittings: with extractable and interchangeable jaws, shaped according to the diameter to weld, it is possible to lock all branch points (drawings 1, 2, 3).*